

ROXX

**gazzini**  
CERAMICHE D'ARTE



BEIGE  
GREY  
IVORY  
GREEN

ROXX



**ROXX**



BEIGE 30x60 RETTIFICATO







ROXX





GREEN 30x30 + 30x60 + 60x60 RETTIFICATO







ROXX



GREY 40x80 RETTIFICATO







ROXX

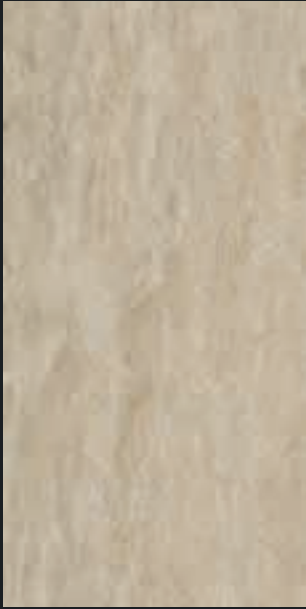




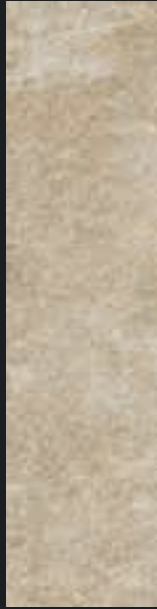
IVORY 30x30 RETTIFICATO + 10x30 sfuso + 6,5x30 LISTELLO MURANO + 3,5x30 LONDON + 30x30 MOSAICO ESAGONO







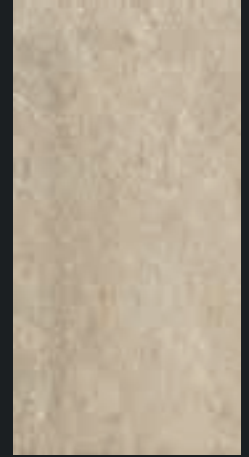
408101  
ROXX BEIGE RETTIFICATO  
40x80 / 16"x32" COD. 79 □



208039  
ROXX BEIGE RETTIFICATO  
20x80 / 8"x32" COD. 89 □



606128  
ROXX BEIGE RETTIFICATO  
60x60 / 24"x24" COD. 79 □



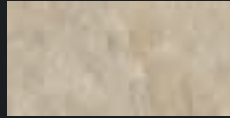
490421  
ROXX BEIGE RETTIFICATO  
30x60 / 12"x24" COD. 76 □



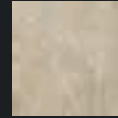
040885  
ROXX BEIGE RETTIFICATO  
30x30 / 12"x12" COD. 76 □



040889  
ROXX BEIGE  
7,5x15 / 3"x 6" sfuso COD. 95 □



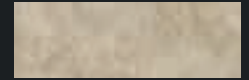
250013  
ROXX BEIGE RETTIFICATO  
15x30 / 6"x12" COD. 72 □



230242  
ROXX BEIGE RETTIFICATO  
15x15 / 6"x 6" COD. 74 □



450364  
ROXX BEIGE RETTIFICATO  
10x10 / 4"x4" COD. 94 □



103057  
ROXX BEIGE RETTIFICATO  
10x30 / 4"x12" COD. 74 □



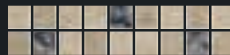
040893  
ROXX BEIGE MOSAICO 5x5  
su rete 30x30 / 12"x12" COD. 22 ○



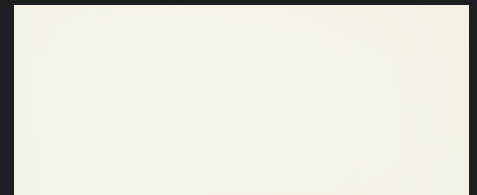
040897  
ROXX BEIGE EXAGON  
MOSAICO 30x30 / 12"x12" COD. 43 ○



380194  
ROXX BEIGE LONDON  
3,5X30 / 1,3"x12" COD. 32 ○



380198  
ROXX BEIGE LIST. MURANO GLASS  
6,5x30 / 2,5"x12" COD. 31 ○



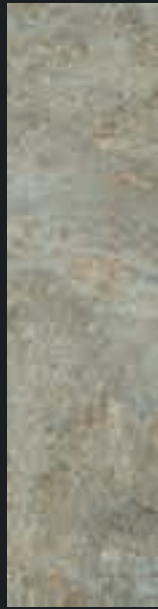
390395  
TOUCH WHITE  
25X60 / 9,8x24 COD. 66 □



# ROXX GREEN



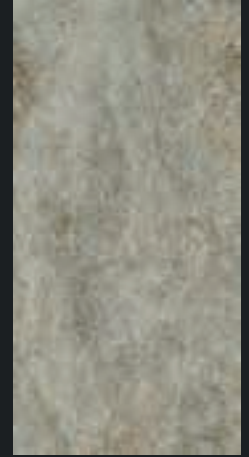
408104  
ROXX GREEN RETTIFICATO  
40x80 / 16"x32" COD. 79 □



208042  
ROXX GREEN RETTIFICATO  
20x80 / 8"x32" COD. 89 □



606131  
ROXX GREEN RETTIFICATO  
60x60 / 24"x24" COD. 79 □



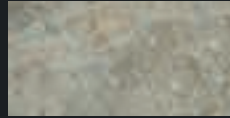
490424  
ROXX GREEN RETTIFICATO  
30x60 / 12"x24" COD. 76 □



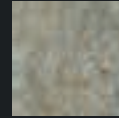
040888  
ROXX GREEN RETTIFICATO  
30x30 / 12"x12" COD. 76 □



040892  
ROXX GREEN  
7,5x15 / 3"x6" sfuso COD. 95 □



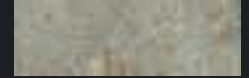
250014  
ROXX GREEN RETTIFICATO  
15x30 / 6"x12" COD. 72 □



230245  
ROXX GREEN RETTIFICATO  
15x15 / 6"x6" COD. 74 □



450367  
ROXX GREEN RETTIFICATO  
10x10 / 4"x4" COD. 94 □



103060  
ROXX GREEN RETTIFICATO  
10x30 / 4"x12" COD. 74 □



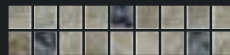
040896  
ROXX GREEN MOSAICO 5x5  
su rete 30x30 / 12"x12" COD. 22 ○



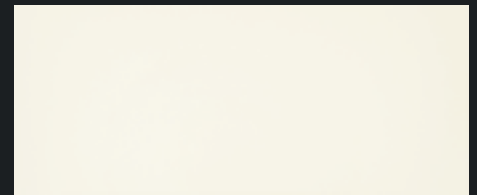
040900  
ROXX GREEN EXAGON  
MOSAICO 30x30 / 12"x12" COD. 43 ○



380197  
ROXX GREEN LONDON  
3,5x30 / 1,3"x12" COD. 32 ○

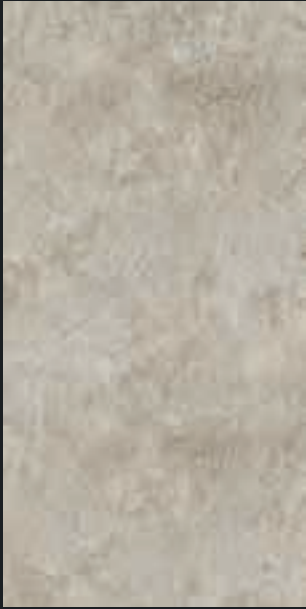


380201  
ROXX GREEN LIST. MURANO GLASS  
6,5x30 / 2,5"x12" COD. 31 ○

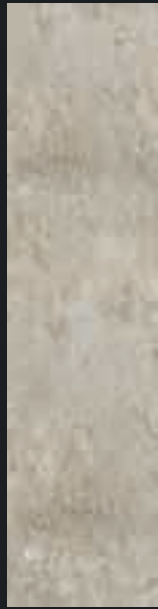


390395  
TOUCH WHITE  
25x60 / 9,8x24 COD. 66 □





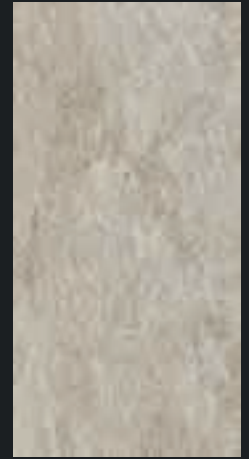
408103  
ROXX GREY RETTIFICATO  
40x80 / 16"x32" COD. 79 □



208041  
ROXX GREY RETTIFICATO  
20x80 / 8"x32" COD. 89 □



606130  
ROXX GREY RETTIFICATO  
60x60 / 24"x24" COD. 79 □



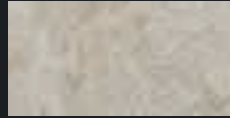
490423  
ROXX GREY RETTIFICATO  
30x60 / 12"x24" COD. 76 □



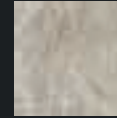
040887  
ROXX GREY RETTIFICATO  
30x30 / 12"x12" COD. 76 □



040891  
ROXX GREY  
7,5x15 / 3"x6" sfuso COD. 95 □



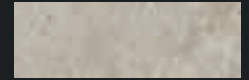
250015  
ROXX GREY RETTIFICATO  
15x30 / 6"x12" COD. 72 □



230244  
ROXX GREY RETTIFICATO  
15x15 / 6"x6" COD. 74 □



450366  
ROXX GREY RETTIFICATO  
10x10 / 4"x4" COD. 94 □



103059  
ROXX GREY RETTIFICATO  
10x30 / 4"x12" COD. 74 □



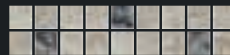
040895  
ROXX GREY MOSAICO 5x5  
su rete 30x30 / 12"x12" COD. 22 ○



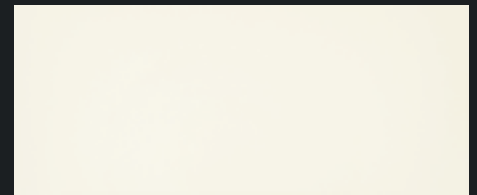
040899  
ROXX GREY EXAGON  
MOSAICO 30x30 / 12"x12" COD. 43 ○



380196  
ROXX GREY LONDON  
3,5x30 / 1,3"x12" COD. 32 ○



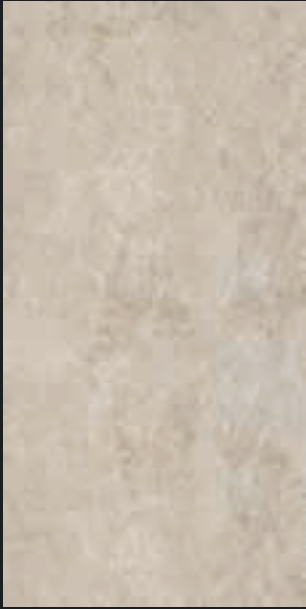
380200  
ROXX GREY LIST. MURANO GLASS  
6,5x30 / 2,5"x12" COD. 31 ○



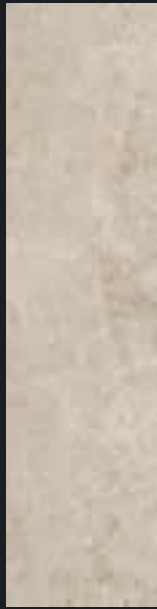
390395  
TOUCH WHITE  
25x60 / 9,8x24 COD. 66 □







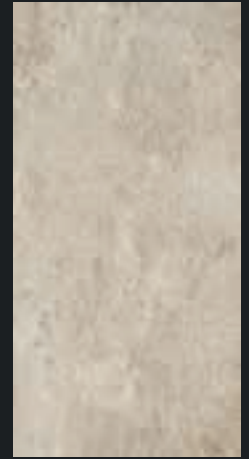
408102  
ROXX IVORY RETTIFICATO  
40x80 / 16"x32" COD. 79 □



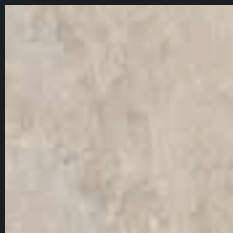
208040  
ROXX IVORY RETTIFICATO  
20x80 / 8"x32" COD. 89 □



606129  
ROXX IVORY RETTIFICATO  
60x60 / 24"x24" COD. 79 □



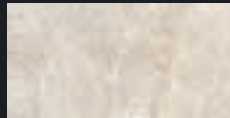
490422  
ROXX IVORY RETTIFICATO  
30x60 / 12"x24" COD. 76 □



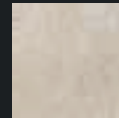
040886  
ROXX IVORY RETTIFICATO  
30x30 / 12"x12" COD. 76 □



040890  
ROXX IVORY  
7,5x15 / 3"x6" sfuso COD. 95 □



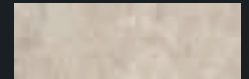
250016  
ROXX IVORY RETTIFICATO  
15x30 / 6"x12" COD. 72 □



230243  
ROXX IVORY RETTIFICATO  
15x15 / 6"x6" COD. 74 □



450365  
ROXX IVORY RETTIFICATO  
10x10 / 4"x4" COD. 94 □



103058  
ROXX IVORY RETTIFICATO  
10x30 / 4"x12" COD. 74 □



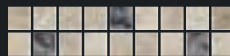
040894  
ROXX IVORY MOSAICO 5x5  
su rete 30x30 / 12"x12" COD. 22 ○



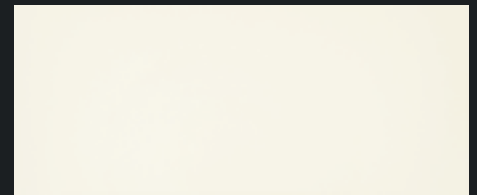
040898  
ROXX IVORY EXAGON  
MOSAICO 30x30 / 12"x12" COD. 43 ○



380195  
ROXX IVORY LONDON  
3,5x30 / 1,3"x12" COD. 32 ○



380199  
ROXX IVORY LIST. MURANO GLASS  
6,5x30 / 2,5"x12" COD. 31 ○



390395  
TOUCH WHITE  
25x60 / 9,8x24 COD. 66 □



## BATTISCOPA



290585  
ROXX BEIGE BATTISCOPA 7x30  
Cod. 17 △

290586  
ROXX IVORY BATTISCOPA 7x30  
Cod. 17 △

290587  
ROXX GREY BATTISCOPA 7x30  
Cod. 17 △

290588  
ROXX GREEN BATTISCOPA 7x30  
Cod. 17 △



290589  
ROXX BEIGE BATTISCOPA 7x60  
Cod. 22 △

290590  
ROXX IVORY BATTISCOPA 7x60  
Cod. 22 △

290591  
ROXX GREY BATTISCOPA 7x60  
Cod. 22 △

290592  
ROXX GREEN BATTISCOPA 7x60  
Cod. 22 △

## GRADINO



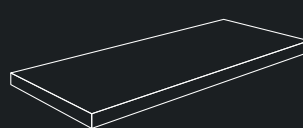
490437  
ROXX BEIGE GRADINO 33x60  
Cod. 112 ○

490440  
ROXX IVORY GRADINO 33x60  
Cod. 112 ○

490439  
ROXX GREY GRADINO 33x60  
Cod. 112 ○

490438  
ROXX GREEN GRADINO 33x60  
Cod. 112 ○

## ANGOLARI



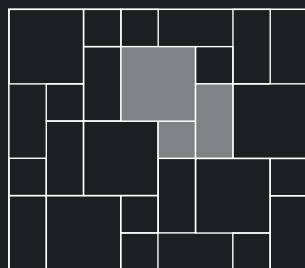
490441  
ROXX BEIGE ANGOLO GRADINO 33x60  
Cod. 107 ○

490444  
ROXX IVORY ANGOLO GRADINO 33x60  
Cod. 107 ○

490443  
ROXX GREY ANGOLO GRADINO 33x60  
Cod. 107 ○

490442  
ROXX GREEN ANGOLO GRADINO 33x60  
Cod. 107 ○

## SUGGERIMENTI DI POSA • LAYING PROPOSALS • SOLUTIONS DE POSE • VERLEGEVORSCHÄGE



600149  
ROXX BEIGE COMP. 1  
COD. 79 □

600147  
ROXX IVORY COMP. 1  
COD. 79 □

600148  
ROXX GREY COMP. 1  
COD. 79 □

600150  
ROXX GREEN COMP. 1  
COD. 79 □










30x30.....14,29%  
30x60.....28,57%  
60x60.....57,14%

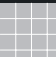


□ = mq

○ = pz

△ = ml

CARATTERISTICHE DI QUALITÀ QUALITY CHARACTERISTICS CARACTÉRISTIQUES DE QUALITÉ QUALITÄTSEIGENSCHAFTEN	NORMA NORM NORME NORME	REQUISITO NORMA REQUIRED STANDARDS VALEUR PRESCRITE SELON LA NORME NORMVORGABE	RISULTATO RESULT RÉSULTAT ERGEBNISS
 Assorbimento d'acqua Water absorption of the body Absorption d'eau de support Wasseraufnahme des Scherbens	ISO 10545-3	≤ 0,5	0,1%
 Resistenza a flessione Breaking strenght Résistance à la flexion Biegefestigkeit	ISO 10545-4	≥ 35 N/mm <sup>2</sup>	51 N/mm <sup>2</sup>
 Resistenza all'abrasione Abrasion resistance Resistance a l'abrasion Abriebbestaendigkeit	ISO 10545-7		PEI V
 Resistenza al gelo Frost resistance Résistance au gel Frostbeständigkeit	ISO 10545-12	Nessun campione deve presentare rotture o alterazioni apprezzabili alla superficie No samples must show ruptures or noticeable surface alteration Aucuns enchantions doit présenter ruptures ou altérations appréciables de la surface Keines der Muster sollte Risse oder sichtbare Fehler der Oberflaeche zeigen	Conforme Conformity Conforme Gemäss
 Resistenza all'attacco chimico Chemical resistance Résistance à l'attaque chimique Beständigkeit gegen Chemikalien	ISO 10545-13	Nessun campione deve presentare alterazioni visibili all'attacco chimico No samples must show visible signs of chemical attack Aucuns enchantions doit présenter des altérations visibles à l'attaque chimique Keines der Muster sollte sehenswerte Aenderungen nach Behandlung mit Chemikalien zeigen	Conforme Conformity Conforme Gemäss
 Resistenza agli sbalzi termici Thermal shock resistance Resistance aux ecartis de température Temperaturwechselbeständigkeit	ISO 10545-5		Conforme Conformity Conforme Gemäss
 Resistenza scivolosità Sliding resistance Resistance au glissement Rutschfestigkeit	DIN 51130 R		R10
 Coefficiente d'attrito (scivolosità) Friction coefficient (slipperiness) Reibungskoeffizient (schluepfrigkeit) Coefficient de friction (glissement)	ASTM C 1028	> 0,6  ≥ 0,6	DRY > 0,6  WET > 0,6
 Forte stonalizzazione Substantial Variation Effet dénuancé très accentué akzentuierte Variation			V4

 Aspetto uniforme  
Uniform appearance  
Aspect uniforme  
einheitliches Aussehen


V1

 Lieve Variazione  
Slight Variation  
Légère Variation  
geringe Abweichung

V2

 Moderata Variazione  
Moderate Variation  
Variation modérée  
maessige Abweichung

V3

 Forte stonalizzazione  
Substantial Variation  
Effet dénuancé très accentué  
akzentuierte Variation

V4

MADE IN ITALY



## PER UNA POSA OTTIMALE DEL PRODOTTO CONSIGLIAMO SEMPRE DI MESCOLARE ALMENO TRE SCATOLE DI MATERIALE.

For the best product laying results, material from at least three boxes should be mixed.

Für eine optimale Verlegung des Erzeugnisses empfehlen wir stets, mindestens drei Packungen Material anzumischen.

Pour une pose excellente, nous recommandons toujours de mélanger le contenu d'au moins trois boîtes.



### CERAMICA GAZZINI E L'AMBIENTE

In accordo con la norma ISO 1402 "Environmental labels and declarations" si dichiara che:

L'azienda è impegnata nella continua innovazione tecnologica dei propri processi per realizzare prodotti sempre più rispondenti alle richieste del mercato e nell'ottica di:

- **riduzione del consumo energetico dei processi di produzione;**
- **riduzione delle emissioni nell'aria e nell'acqua;**
- **miglioramento dell'informazione al consumatore e della gestione dei rifiuti.**

Per limitare il proprio impatto ambientale CERAMICA GAZZINI S.p.A. opera come di seguito descritto:

- **gli scarti di lavorazione sono completamente gestiti e riutilizzati;**
- **tutti gli stabilimenti produttivi sono dotati di impianto di depurazione delle acque a circuito chiuso con recupero totale degli scarichi idrici provenienti dal ciclo produttivo e nessuno scarico in ambiente;**
- **le emissioni gassose sono autorizzate dall'autorità competente, dotate di impianti per l'abbattimento degli inquinanti e sottoposte a controllo periodico per verifica del rispetto della legislazione vigente;**
- **i rifiuti industriali sono smaltiti in conformità alle direttive comunitarie;**
- **gli imballaggi sono destinati al recupero e riutilizzo;**
- **l'impatto acustico nell'ambiente è attenuato con l'utilizzo di tecnologie idonee.**

Le piastrelle ceramiche prodotte sono:

- **un prodotto con una lunga durata di vita**
- **riciclabili al termine dell'utilizzo**

### CERAMICA GAZZINI AND THE ENVIRONMENT

In line with the ISO 14021 standard "Environmental labels and declarations" we declare that:

The company is committed to the continued technological innovation of its processes to create products that increasingly meet the demands of the market and focus on:

- **reduced energy consumption in production processes;**
- **reduced emissions into the air and water;**
- **improving consumer awareness and waste management.**

To curb its environmental impact, CERAMICA GAZZINI S.p.A. has taken the following steps:

- **manufacturing rejects are fully managed and reused;**
- **all the production units are equipped with a closed-circuit water purification plant with total recovery of liquid discharges coming from the production cycle and no discharges into the environment;**
- **emissions of gases are authorised by the competent authority, pollutant abatement systems are fitted and undergo periodic checks to verify they comply with the current laws;**
- **industrial waste is disposed of in compliance with the community directives;**
- **packaging is sent off to be recycled and reused;**
- **the acoustic impact on the environment is toned down via the use of suitable technologies.**

The ceramic tiles produced are:

- **a long-lasting product**
- **recyclable at the end of their use**

ROXX



Ceramica Gazzini SpA - via Milano, 2 - 42048 Rubiera (Reggio Emilia) Italy  
Tel. 0522 628112 - 627518 - 628639 - Fax 0522 628437  
info@ceramicagazzini.it - www.ceramicagazzini.it

C.F. E P.I. 00140380353 - REG. IMP. REGGIO EMILIA N° 00140380353  
CAPITALE SOCIALE I.V. € 546.000,00



*"Campione gratuito di modico valore F.c. Iva art.2 3° comma lettera d D.P.R. 633/72 succ. mod."*